



MOUNTING INSTRUCTIONS

2321-0002 MEMPHIS FATS/SLIMS MOUNTING KIT HONDA VTX 1800 CHROME COVERED FORKS - 06

! WARNING

Read and follow these directions carefully. During installation, make certain that when turning the forks, there can be no interference with wiring or cables AND, that the mounting hardware can not hit the gas tank, through the windshield's full range of adjustment.

This is a quick change kit, **ALWAYS** tighten all mounting bolts after removing or installing the windshield! The improper installation of this kit and related components could result in serious injury or death.

Additional tools required, that are not included in this kit. 7/16" or 11mm wrench.

1. Cover gas tank and front fender with towels to avoid damage during installation.
2. Install the two mounting plates onto the windshield, using the bottom and third bolt up. Leave the nylon washers off. The small tab goes to the bottom, big one at the top. (see Figure 1) *Tabs face in towards the headlight when installed correctly.*

WARNING

If the adjustable clamps are installed backwards, it will result in serious gas tank damage. Always check for proper gas tank clearance before tightening hardware. (see Figure 2)

3. Loosely install the fork clamps, approximately 1 3/4" apart. (see Figure 2)
 4. Loosen the four anchor bolts that are to hold the windshield to the fork clamps, and slide the mounting plates onto the anchor bolts. (see Figure 3)
 5. Adjust the height, angle and alignment of the shield and tighten ALL bolts.
- This is a quick change kit. ALWAYS tighten all mounting bolts after removing or installing the windshield.*

CAUTION

IMPORTANT CARE AND CLEANING INSTRUCTIONS

Memphis Shades Windshields and Lowers are made of Lucite® acrylic, and will last for years with proper care. Clean your windshield with plenty of soapy water — mild dishwashing liquid is best — and a soft cotton cloth. Use your bare hand to feel and dislodge bugs, or cover with a wet soapy towel and let it soak. Don't use paper towels and don't scrape with anything. Small scratches can be removed with NOVUS # 2.

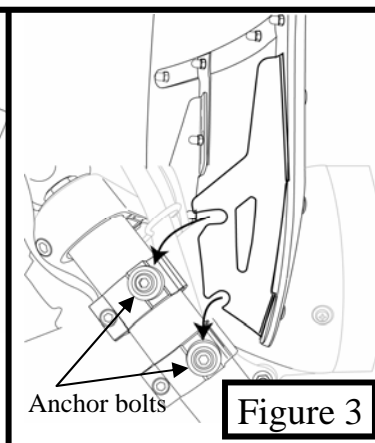
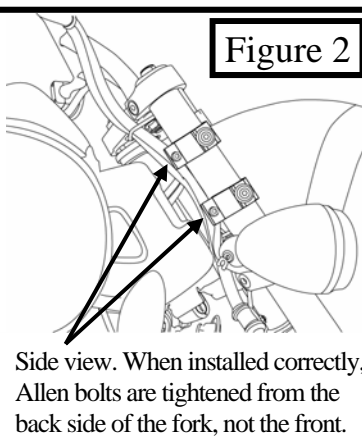
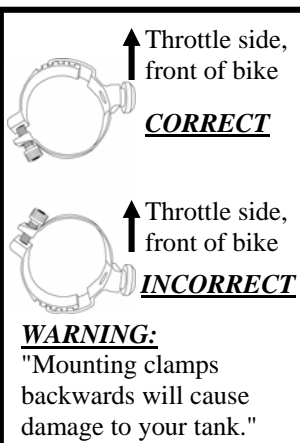
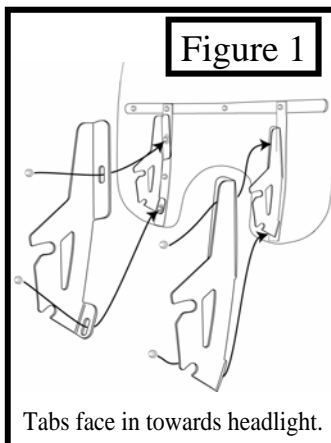
NEVER use any glass cleaning products, petroleum based chemicals, or cleaning agents with ammonia, bleach or any other harsh chemicals. This includes (but not limited to) RainX, brake fluid, acetone, paint thinner, benzene and gasoline. "If it hurts your nose, it will hurt the plastic."

Glass cleansing agents will cause severe damage to your windshield, and will void your warranty.

NOTE: At certain times of the day the Sunlight can reflect off the curvature of a windshield and cause extreme heat build-up on motorcycle instruments and instrument panel. Take care when parking. Park facing the sun, place an opaque object over the instruments or adjust the windshield to avoid reflections.

Important

Slide the fork clamps down until the lower fork clamp touches the lower triple tree. Then make sure the upper fork clamp will not hit the gas tank. Gas Tank **WILL** be damaged if not installed correctly

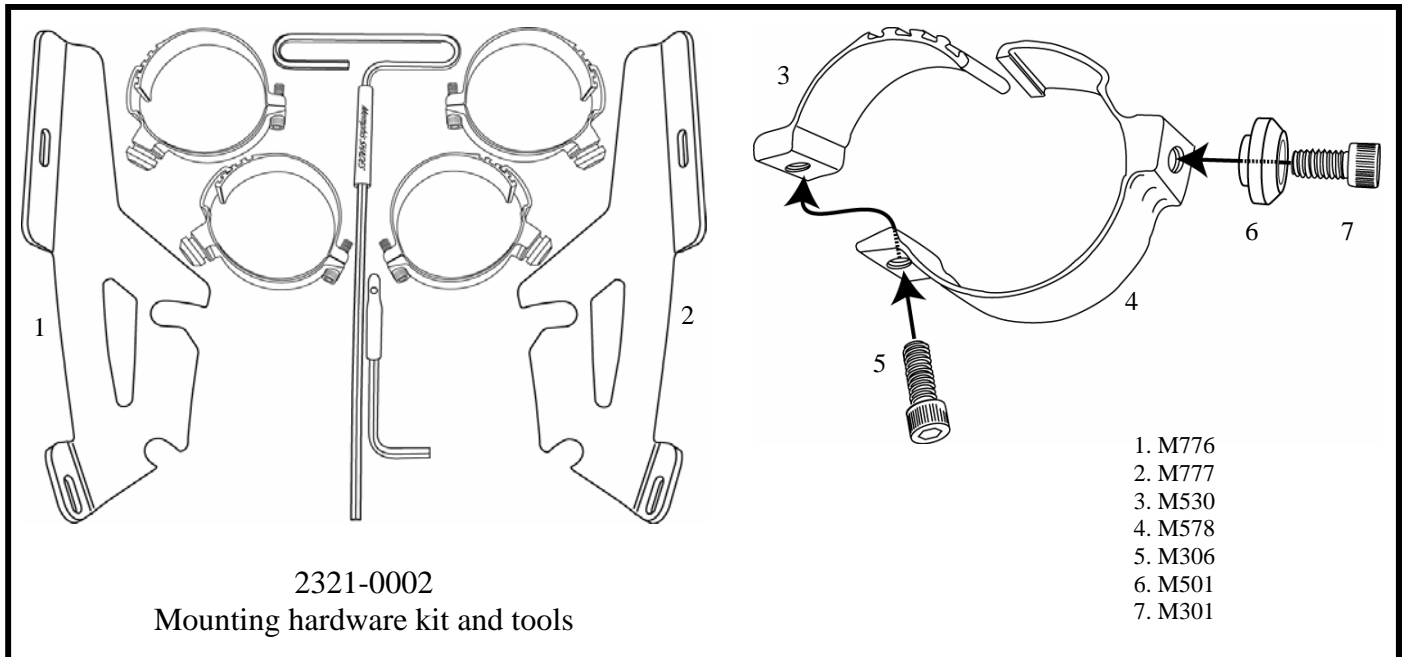




MOUNTING INSTRUCTIONS

2321-0002 MEMPHIS FATS/SLIMS MOUNTING KIT HONDA VTX 1800 CHROME COVERED FORKS - 06

PART #	DESCRIPTION	QTY.
M982	MOUNTING INSTRUCTIONS	1
M777	LEFT VTX MOUNTING PLATE	1
M776	RIGHT VTX MOUNTING PLATE	1
M301	1/4" - 20 X 3/8" SS SOCKET HEAD CAP SCREW	4
M306	1/4" - 20 X 3/8" SS SOCKET HEAD CAP SCREW	4
M530	EXTRA LARGE INNER ADJ. FORK CLAMP W/TAPE	4
M578	MEDIUM OUTER ADJ. FORK CLAMP W/TAPE	4
M501	BEVELED SOCKET WASHER	4
M375	P/S ADHESIVE TAPE	4
M310	3/16" SHORT ARM ALLEN WRENCH	1
M313	3/16" ALLEN WRENCH COVER	1
M314	3/16" T-HANDLE ALLEN WRENCH	1
M337	3/16" T-HANDLE ALLEN WRENCH COVER	1



Memphis Shades warrants all product components, metal and plastic, against defects in materials and workmanship for 24 months.

FOR PARTS AND WARRANTY HELP, CONTACT:

MEMPHIS SHADES

P. O. Box 429

Rossville, TN 38066

(901) 853-0293

Visit us on the web at www.memphisshades.com or

you can also reach us at

customerservice@memphisshades.com